

Next-Gen Strategies

for Connected Enterprises

Issue #02 | February 2025



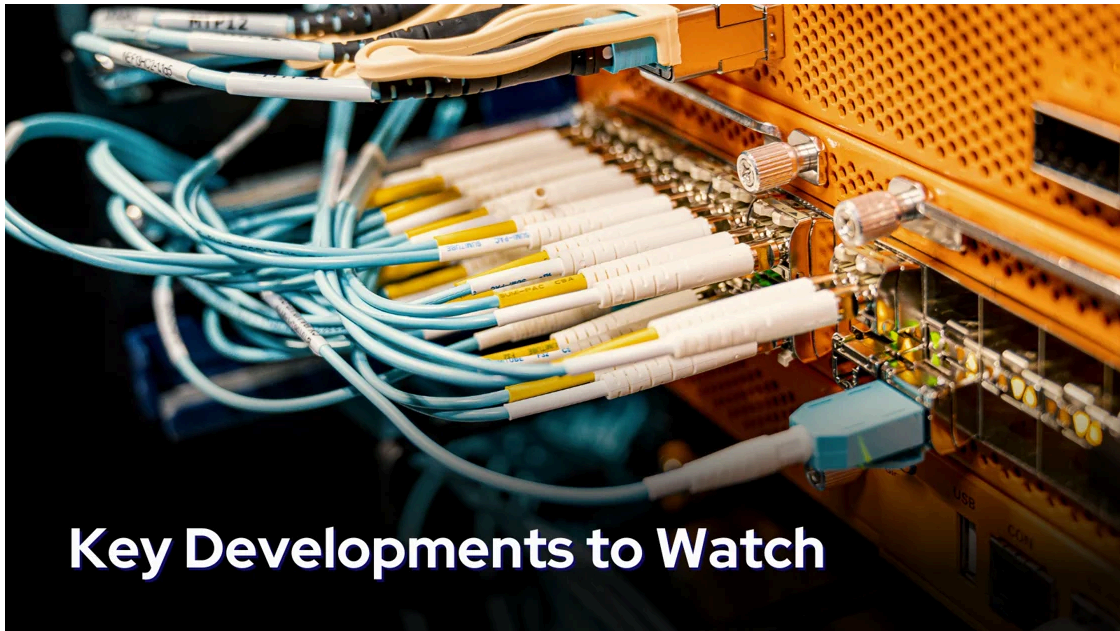
Dear Valued Partners and Clients,

We are thrilled to unveil the **Plekton AI Lab**—a cutting-edge R&D center dedicated to crafting groundbreaking accelerators, tools, and techniques that elevate our core services. This innovative lab is set to revolutionize our enterprise integration, APIs, event-driven integration, and cloud services, all powered by Salesforce and Enterprise Integration technologies. By harnessing the power of AI, we enhance our internal capabilities and refine our service delivery. Through the Plekton AI Lab, we pledge to:

- **Revolutionizing Service Delivery:** Innovating with state-of-the-art accelerators and methodologies to enhance efficiency.
- **Maximizing Productivity:** Designing advanced tools to elevate our enterprise integration and API management.
- **Achieving Cost Efficiency:** Deploying strategies that cut expenses while enhancing performance.
- **Leading Innovation:** Setting the stage for groundbreaking advancements in our integration and cloud service solutions.

Our relentless pursuit of excellence drives us to constantly enhance and innovate, guaranteeing our clients access to more intelligent, rapid, and eco-friendly solutions. Keep an eye out for exciting updates as we continue to break new ground in technology and set new benchmarks in the industry.

Warm regards,
The Visionaries at PlektonLabs



AI & Telecom: The Future of Intelligent Integration

In North America, the fusion of AI with telecommunications and CRM is rapidly gaining momentum.

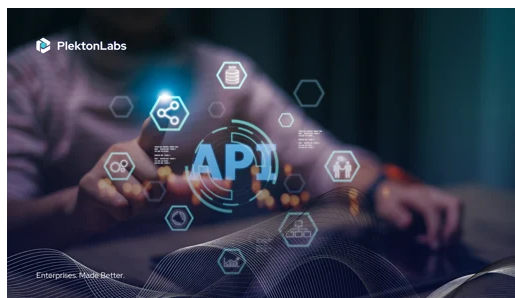
[T-Mobile US](#) has teamed up with OpenAI to create IntentCX, a groundbreaking AI platform designed to revolutionize customer retention and streamline services. This cutting-edge initiative is slated for a 2025 debut.

Meanwhile, [Twilio](#) has celebrated its first positive operating income and is harnessing the power of AI through strategic partnerships with OpenAI and AWS to transform customer communications.

On the infrastructure side, [Nokia and AT&T](#) have inked a multi-year deal to enhance AT&T's voice carriage and 5G network automation across the U.S., incorporating advanced AI and machine learning technologies.

These pioneering advancements **highlight the pivotal role of AI in propelling innovation and boosting efficiency** within the telecom and CRM industries.

—PlektonLabs: Pioneering Intelligent Integration for the Future.



The API Reusability Imperative

In the rapidly evolving digital landscape, businesses are challenged to provide solutions that are not only swift and intelligent but also budget-friendly.

API reusability speeds development and cuts costs by up to 40%. Learn about **GenAI API** Discovery Engine.



Monetizing APIs 101

Unlock the potential of your APIs by transforming integrations into profit with our innovative dynamic pricing strategies.

Elevate your API's worth and enhance customer satisfaction for the long haul through essential models, performance indicators, and strategic growth plans.

Inspired by what you have read? Here is more

PLEKTONLABS SUCCESS STORIES

case study

API CATALOG TO IMPROVE & INSPIRE REUSABILITY

Discover how a global telecom giant streamlined its complex API landscape, driving app development and innovation.

[Read more](#)



Enterprises. Made Better.

[Discover](#) how this case study uncovers the strategic blueprint for creating a unified API catalog, alongside their innovative approach to elevating API governance and seamlessly integrating cutting-edge monitoring and analytics.

PLEKTON PULSE



Lee Humeniuk

Director of Technology, Products & Accelerators

I've been with Plekton for just over 1 year (14 months).

The best thing about working at Plekton is the people. There is a lot of experience across the team, and a core part of the culture is that everyone is always willing to help.

Currently working with **BigSteelBox**.

We built a Mulesoft integration last year which **enables bi-directional sync between Salesforce and SAP**.

Now we are helping to make improvements and enhancements to **fit additional business requirements** around their customer self-service initiatives.

I'm based out of Edmonton. I love to travel and **often volunteer to mentor university students in computer science and entrepreneurship**.

HEALTH CHECK SERVICES


Unlock peak performance with PlektonLabs' **Health Check Services**! Our expert outlook uncovers inefficiencies, ensuring **complete API security control** and seamless architecture alignment. From strategic planning to **code performance reviews**, we fine-tune every detail.

Stay Ahead with Actionable Insights!

Get a **comprehensive integration landscape report** packed with security checks and optimization strategies. Armed with data-driven insights, your organization can make bold, informed decisions and lead the way in innovation!

Is Your API Security Leaving Backdoors Open? Our Team Can Help You.

Support & Contact Information

 Phone: +1(877) 855-8775

 Email: newsletter@plektonlabs.com

 Website: www.plektonlabs.com

If you would like to forward this newsletter, [click here to sign up](#).

***PlektonLabs** is a boutique integration consultancy empowering businesses to thrive in an ever-evolving digital world. Being future-ready means adapting with agility, scaling seamlessly, and leading with innovation. We deliver tailored solutions that connect systems, streamline processes,*

and build resilience for long-term success. Ready to take your business to the next level? Let's build your future together - contact us today!



PlektonLabs, Austin, Texas, | Toronto, Ontario

[Unsubscribe](#) [Manage preferences](#)